

# Anytime 500 Routing Step Copy

## Industries

- Discrete Manufacturers
- Mixed-Mode Manufacturers
- Light Manufacturing & Assembly
- Job Shop and Make to Order
- Lean Manufacturing
- Make to Order and Job Shop

## Integrated Modules

- Light Manufacturing (Sage)
- Advanced Manufacturing (Sage)

## Suggested Modules

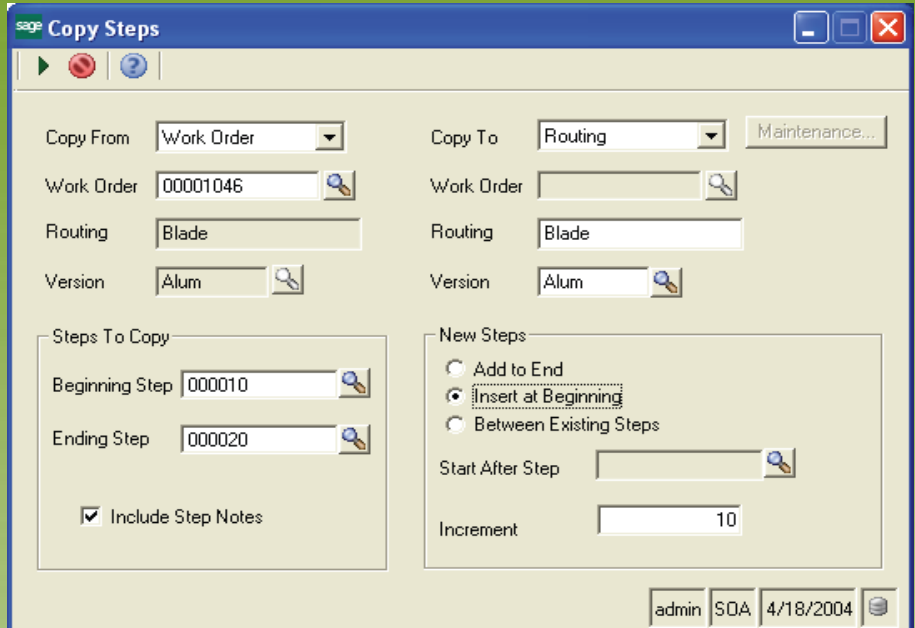
- Work Order Splitting (e2b)
- Engineering Change Orders (e2b)

## Benefits Overview

- Copy steps from previously defined Routings or Work Orders to new or existing Routings or Work Orders
- Useful for creating rework templates which can be copied into Work Orders
- Add copied steps to end, beginning or between steps on the existing Routing or Work Order
- Optionally Copy Step notes from the source to the destination Routing or Work Order
- Launch Routing or Work Order Maintenance from the Routing Copy Steps screen to view the new Routing or Work Order

## ClientCare Plans

- Free Upgrades and Hot Fixes
- Unlimited Product Support
- Installation Assistance & Training



## Streamline Routing & Bill of Material Definition with Routing Step Copy

Routing Step Copy streamlines the routing and bill of material process by allowing companies to setup template routings containing common manufacturing instructions. Routing Step Copy allows you to copy manufacturing instructions from the template (or other routings or work orders) to new or existing routings or work orders. This utility can save considerable time – especially for manufacturers who produce hundreds of similar items.

Templates may be defined and copied into new or existing Routings or Work Orders to define the quality control procedures or rework steps required when an item fails to meet quality standards. This is useful with the Work Order Splitting module where a quantity of bad parts may be split off to a new Work Order from the original Work Order and then routed through a series of rework steps to correct the problem.

Step increments allow you to insert steps from the source to the

destination Routing or Work Order using a new increment number for destination steps. For example if we copy two steps – QC Inspect and Rework and insert them after the second step on a destination routing that already contains three steps for Material, Fabricate, and Assemble – the new routing would look like this:

Source	Destination
10 QC Inspect	10 Material
20 Rework	20 Fabricate
	30 Assemble

New Routing
10 Material
20 Fabricate
30 QC Inspect
40 Rework
50 Assemble

Job Shops and other make to order manufacturers will benefit from this enhancement since production steps may be copied from previously completed Work Orders for similar products to new Routings or Work Orders.

# Anytime 500 Routing Step Copy

## Product Features

<b>Routing &amp; Work Orders</b>	Routing Step Copy can be used to copy production standards from existing Routings or Work Orders to new or existing Routings or Work Orders.
<b>Step Ranges</b>	Copy a single step or a range of steps from the source Routing or Work Order into the destination Routing or Work Order.
<b>Templates</b>	Routing Step Copy is ideal for companies who need to define a template for specific processes and then copy the template to Routings and/or Work Orders. Routing Step Copy is also very useful for job shops and make-to-order manufacturers who often have similar materials and labor processes across unique jobs.
<b>Rework</b>	Rework instructions can be defined and copied to Work Orders that require rework to correct products that have failed to meet quality standards. Users of Work Order Splitting can split off the defective quantities to a separate Work Order and copy the rework steps into the new Work Order.
<b>Step Insertion</b>	Steps may be copied from the source Routing or Work Order and inserted at the beginning or end of the source Routing or Work Order or inserted after a defined Step in the destination Routing or Work Order.
<b>Step Order</b>	Inserting Steps in the middle of a process results in the automatic renumbering of upstream or future Routing steps.
<b>Step Notes</b>	Step Notes from the source Routing or Work Order can be optionally copied to the destination routing or Work Order.
<b>Step Increment</b>	Users define the numeric step increment to use for steps copied to the destination Routing or Work Order.
<b>Task Maintenance</b>	A button is available on the Step Copy screen to launch Routing Maintenance or Work Order Maintenance for the destination record.

enabling  
Performance  
& Productivity  
& Profitability  
SME CMA

©2012 e2b technologies, inc. All rights reserved. Reproduction in whole or in part without permission is prohibited. The capabilities, system requirements and/or compatibility with third party products described herein are subject to change without notice. Contact e2b technologies for current information.