

Anytime 500 Work Order Allocations

Industries

- Discrete Manufacturers
- Mixed-Mode Manufacturers
- Make to Order / Job Shop

Required Modules

- Advanced Manufacturing (Sage)

Suggested Modules

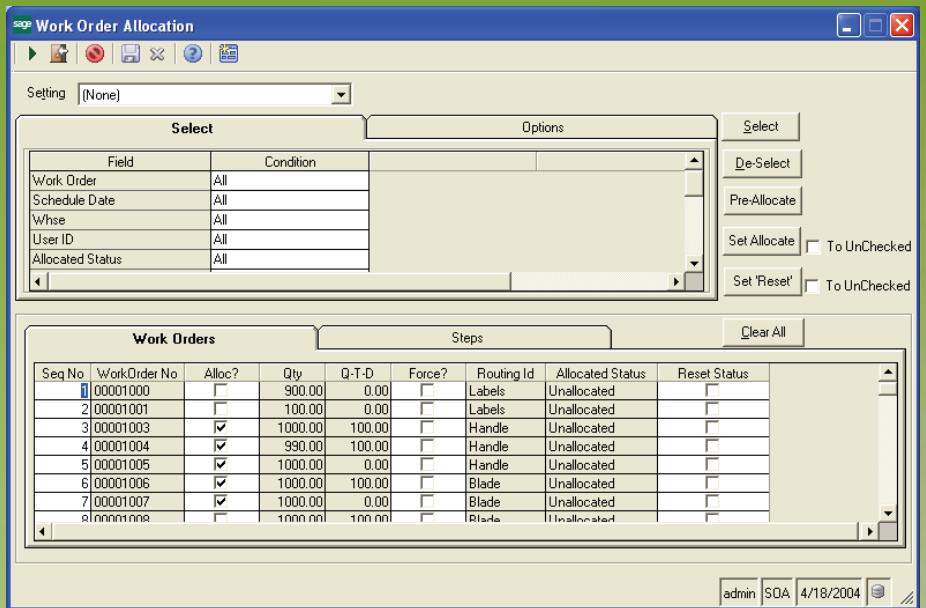
- Sub Work Orders (e2b)
- Enhanced MRP (e2b)

Benefits Overview

- Only release work orders when the required components and raw materials are available
- Prioritize work orders so that materials are allocated to critical work orders first
- Multiple selection options can be used to allocate material based on priority code, scheduled date, and other options

ClientCare Plans

- Available for 30% of List Price
- Free Upgrades and Hot Fixes
- Unlimited Product Support
- Installation Assistance & Training



Eliminate material shortages for scheduled jobs by allocating available materials to work orders

Work Order Allocations shows which work orders can be released to production based on their required materials and current on hand inventory quantities. Your shop floor workers will experience huge productivity gains as they will no longer have to wait for material and your management team will finally have a utility to help them synchronize material requirements with production schedules. In addition, this enhancement helps planners prioritize material allocations based on work order dates, priority codes, and other useful criteria.

When used in conjunction with the Sub Work Order enhancement, Work Order Allocations can be selected based on the Sub Work Order range to show how dependent work order demand affects related work orders. For example, if WO 1000 requires manufactured Components A and B;

you can use Sub Work Orders to create Work Orders 1000 (Parent Item), 1000-1 (Component A), and 1000-2 (Component B) and then you can then use Work Order Allocations to make sure that you have enough material to complete these dependent orders.

A Pre-Allocate button is used to flag Work Orders where there is sufficient material to complete the order. The Set Allocate button sets the flags for all work orders in the current selection. The planner can then click the Proceed button to allocate the required materials.

Work Order Allocations is developed in the Sage 500 ERP Application Framework and integrates seamlessly with existing Sage 500 ERP modules.

Anytime 500 Work Order Allocations

Product Features

Inventory Availability

Use the Pre-Allocate utility to determine which work orders can be released to production based on current on-hand inventory levels.

Prioritize Materials

Determine which work orders get priority for materials. You can accomplish this by selecting work orders based on priority codes or by manually adjusting the work order allocation sequence number.

Dependent Demand

Use Work Order Allocations in conjunction with the Sub Work Order enhancement to manage dependent demand from parent work orders and component work orders.

Save Allocation Settings

You can define and maintain multiple settings for running the Work Order Allocations task. For example, you may want to define a setting for allocating materials to Priority 1 orders and then define another setting for allocating materials based on schedule date.

Soft Allocation

Rather than committing inventory to a work order, preventing material from being sold, or issuing the material to the work order, Work Order Allocations changes the status of the inventory item to "allocated" so that there is a soft commitment to a work order.

Undo Allocations

Material allocations can be undone so that the material is once again available for allocation to other work orders.

Work Order Steps

Materials can also be allocated to specific work order steps as opposed to being allocated for the entire work order. This is helpful when work orders have longer lead times that span several days or several weeks or when a work order can be run through a particular step but then it must wait for machine or tool availability before proceeding to upstream operations.

Item Allocations Report

Item allocations can be printed using the flexible Item Allocations Report. Various sort, select, and filter options are available for this report.

Work Order	Step	Item	Description	Qty Open	Qty Available	UOM	N
20006670	1001	05-020016-01	ASSY PCB EURO GGD 160MM	2.0000	12.0000	Each	
20006670	1002	05-030601-01	ASSY PCB MODEM FH915	2.0000	468.0000	Each	
20006670	1008	2010-0141	SCR, #4-40 X .25 PANHD TORX	10.0000	1,257.0000	Each	
20006670	1009	2010-0142	SCR, #4-40 X .50 PANHD TORX	30.0000	3,497.0000	Each	
20006670	1012	2010-0152	INSERT, #4-40 SS PRESS-IN	12.0000	955.0000	Each	
20006670	1013	2020-0138	SCR, #6-32 X .25 PANHD TORX	8.0000	468.0000	Each	
20006670	1014	2060-0122	WASHER, ZNII, .25IDX, 62ODX, 0	16.0000	1,700.0000	Each	
20006670	1016	2060-0148	NUT, 1/4-20 HEX GR&DF 8.2IN	24.0000	2,418.0000	Each	

©2012 e2b technologies, inc. All rights reserved. Reproduction in whole or in part without permission is prohibited. The capabilities, system requirements and/or compatibility with third party products described herein are subject to change without notice. Contact e2b technologies for current information.