

Anytime 500 Enhanced MRP

Industries

- Manufacturing
- Wholesale Distribution

Required Modules

- Inventory Replenishment or Material Requirements Planning (Sage)

Integrated Modules

- Sub Work Orders – Included (e2b)
- Sales Forecasting & MPS (e2b)
- Kanban Replenishment (e2b)
- Engineering Change Orders (e2b)
- Inventory Management (Sage)
- Purchase Orders (Sage)
- Sales Orders (Sage)
- Light Manufacturing (Sage)
- Advanced Manufacturing (Sage)

Suggested Modules

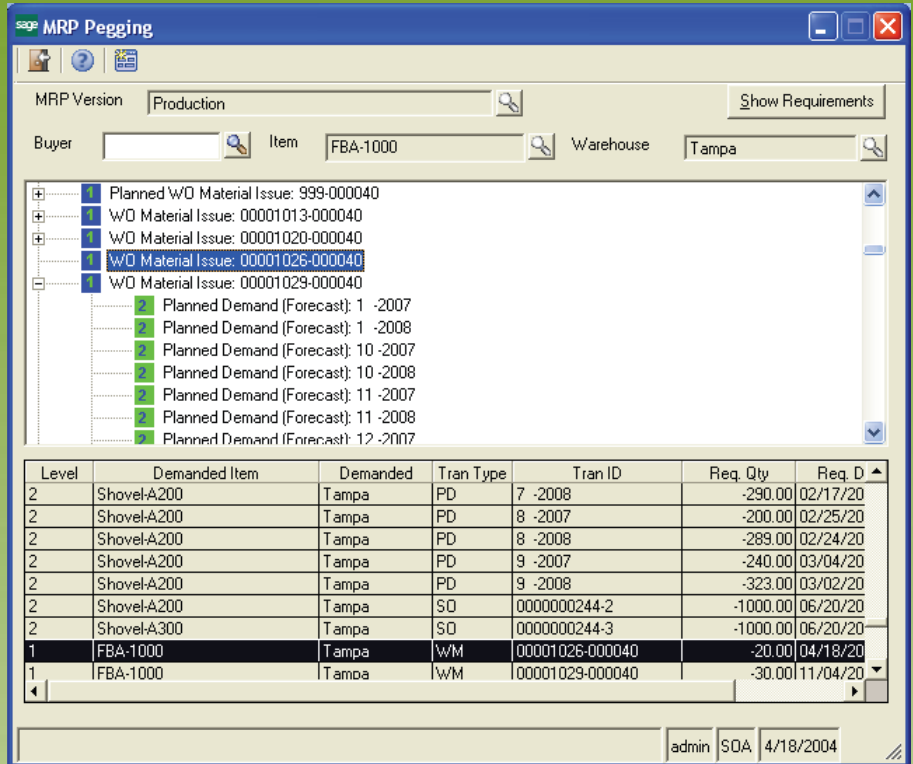
- Sales Forecasting & MPS (e2b)
- Kanban Replenishment (e2b)
- Engineering Change Orders (e2b)

Benefits Overview

- MRP Action Messages for Move-In, Move-Out, and Cancellations
- Change Default Vendors in MRP with an Approved Vendor
- Define inventory as make to stock with demand pegged to sales order lines
- Define Min, Max, and Multiples for purchased Items
- MRP Scheduled Generation Utility
- Demand Pegging Inquiry

ClientCare Plans

- Free Upgrades and Hot Fixes
- Unlimited Product Support
- Installation Assistance & Training



Improve material plans and purchasing with demand pegging, exception messages, approved vendors, new purchase order parameters

It can be difficult to see why MRP suggested order quantities for particular items in Sage 500 ERP MRP. A demand pegging inquiry displays all sources of demand in a tree structure. Demand can include sales orders as well as transfer orders or work order material issues for required components.

Exception messages alert planners to issues regarding actual and planned purchase orders and work orders with recommendations for move-in, move-out, and order cancellations. Planners can print a corresponding Action Message Report or double-click on a specific exception message to move directly to the transaction detail for the item where they can drill further into the source of the exception.

Inventory items can be flagged as "make to order" so that MRP generates planned work orders

dependent to sales order line quantities with the order line copied to the work order as a reference.

The MRP Scheduled Generation Utility is used to automatically generate MRP on a pre-defined schedule, such as nightly or weekly every Sunday night.

Users may define a minimum or maximum order quantity for purchased items similar to the min/max options for manufactured items in Routing Maintenance. Further, purchase multiples may be defined for case packs, truckload quantities, carton orders, or other mandatory purchase multiples.

Additional MRP enhancements include material and planner codes, defaults, significantly improved data processing, and much more.

Enhanced Material Requirements Planning

Product Features

Demand Inquiry

Drill-down to see which actual and planned transactions make-up the demand for items in MRP. The demand inquiry is available directly from the planning screen or from a stand-alone inquiry from the MRP menu. Demand is displayed in a tree-structure and includes sales orders, work order material issues, and transfer orders. This inquiry is especially helpful for material planners working with complex bills of material structures in larger companies where there may be dozens or even hundreds of demand transactions for each suggested order.

Exception Messages

Action or exception messages have been greatly expanded to include more detail regarding actual and planned orders. Exception messages include the item number, warehouse, transaction dates and quantities as well as other critical information. New messages exist for late work orders or purchase orders; suggested work order or purchase date move-in or move-out; suggested work order or purchase order cancellation; and warnings when the work order or purchase order falls inside lead time requirements. New messages include:

- WO or PO is Late
- Move WO or PO In
- Move WO or PO Out

Action Message Report

A new MRP Action Message Report is available which can be filtered and sorted by buyer, planner, vendor, warehouse, and other criteria. The action message report includes exception messages and displays the recommended order date for purchase orders and work orders (in addition to including the due date).

Change Default Vendor

You can now change the default vendor from the MRP Planned Orders grid in MRP Planning. Alternate vendors may be selected if they are setup as approved vendors in Vendor Item Maintenance for the specified item.

Min/Max PO Parameters

You can now set MRP parameters for purchased items similar to MRP Options for manufactured items (defined on the MRP Tab in Routing Maintenance). You may define a minimum or maximum purchase quantity for purchased items so that MRP always generates a purchase order for the minimum quantity and creates a new purchase order if the required quantity exceeds the maximum quantity defined for the inventory record.

Purchase Multiples

Purchase multiples may be defined for items purchased in case packs, cartons, truckloads, or other pre-defined multiples so that MRP always generated purchase orders in the specified order multiple.

Purchase Window

The MRP planning window may be defined for purchased items as an override to MRP from Maintain Inventory. This is useful for slow-moving items where you may want to look at several months of demand for purchase order planning or for fast-moving items which may be reordered more frequently.

Make-To-Order

An inventory item may be flagged as "make-to-order" so that MRP generates a dependent, pegged Work Order for the specific sales order line demand. The sales order and line numbers are copied to the Work Order parts produced grid for reporting and inquiry purposes.

Ship Priority Codes

The ship priority code specified on the sales order line for make-to-order inventory items is copied to the work order priority code when a dependent, planned work order is converted to an actual work order.

Enhanced Material Requirements Planning

Product Features

Sub Work Orders	Sub Work Orders are included with Enhanced MRP. Sub work orders are created automatically for top-level finished goods when a flag is set on the routing to generate sub work orders. Sub Work Orders are numbered incrementally to show their relation to be created at any level within a bill of material structure. When used in conjunction with the make-to-order feature subassembly work orders may be pegged from the sales order line through the bill of materials.
Sales Forecasting	Enhanced MRP is integrated with the e2b Sales Forecasting & MPS module. This is a separate module that can be used to forecast sales demand which is used for MRP calculations in distribution or manufacturing environments.
ECO Effectivity	Enhanced MRP is integrated with the e2b Engineering Change Order module providing time-phased effectivity for approved engineering changes. For example, Enhanced MRP will consider all approved ECOs based on their effective date so that MRP plans for the correct components in the future if a change has been approved even though the change is not effective until a future date.
Scheduled MRP	Planners can schedule MRP to run at night, over the weekend, or during other off-peak times to minimize the impact on other system users. Schedules can be maintained for multiple MRP versions at the same time and can be defined as recurring events. This utility can be used to select items for the MRP generation; to select items and initialize the MRP generation; or to select, initialize, and generate planned orders.
Net Requirements	MRP can be generated for only net or actual sales order requirements which excludes forecasted sales order, work order, and transfer order demand. A new report is available to compare net requirements against the forecast.
Inside Lead Time	A new option is available to prevent work orders or purchase orders from being created within their lead times. Orders are created after their lead times and an exception message is created notifying the planner that they may need to take action to avoid a late material requirement.
Item Filters	You can now filter the planned order and message grids for orders and messages related to a specific item.
Separate Planning	MRP Planning is now available as a separate task. Once MRP is generated, planners can access the Planning MRP Planning screen directly from the menu without launching the task from MRP Generation. Separating these tasks makes it easier to access the planning screen. Further, companies who choose to schedule their MRP generation will only need access to the planning screen. This design also provides more control over MRP Generation criteria by providing an alternative method for buyers and planners to access the task.
Password Protection	Planners can set a password to protect their MRP version. Users will then be prompted to enter the password when they try to load the selected MRP version. Rather than preventing other users from creating different MRP versions which could affect items in another version, Password Protection prevents other users from changing default settings in the selected version.
Drill-Downs	A number of double-click drill-downs have been provided within the Sage 500 ERP MRP Planning Screen to expedite navigation between tabs and items in grids. For example, the planner is immediately moved to the Period Summary for an item when they double-click on an exception message on the Messages tab.

©2012 e2b technologies, inc. All rights reserved. Reproduction in whole or in part without permission is prohibited. The capabilities, system requirements and/or compatibility with third party products described herein are subject to change without notice. Contact e2b technologies for current information.

Enhanced Material Requirements Planning

Product Features

MRP Links	MRP version can now be linked to multiple MRP versions for requirements. For example, a Master Version can link to MRP versions defined for several buyers, different purchased product lines, or other different MRP versions. This allows greater flexibility – especially in larger organizations where MRP is often generated by buyer or by physical location.
Reorder Classification	Enhanced MRP is integrated with Kanban Replenishment so that you can exclude items replenished via Kanban Replenishment from MRP generations. The Reorder Classification code can be used to exclude items reordered via vendor managed inventory or other replenishment methods other than MRP.
Ignore Staging Bins	You can optionally exclude quantities in staging bins from on-hand material calculations. This is very useful for companies who want to ignore specific bins from MRP calculations. It is also useful for most distributors and manufacturers since you may not consider an item on-hand if it's in a staging bin used for picking.
MRP Planner	An MRP Planner code is now available in addition to the existing Buyer code. The MRP Planner code can be used to filter and sort MRP. Further, an email address may be defined by MRP Planner.
Buyer/Planner	You can use the Buyer or MRP Planner codes for item selection from within the MRP Planning activity as accessed from the Select Button on the Item Summary Tab.
Reorder Classification	Enhanced MRP is integrated with Kanban Replenishment so that you can exclude items replenished via Kanban Replenishment from MRP generations. The Reorder Classification code can be used to exclude items reordered via vendor managed inventory or other replenishment methods other than MRP.
Suggested Dates	Suggested Order Dates are displayed on the Transaction Detail Tab in MRP Planning. These dates are generated from Exception Messages alerting planners that demand has changed and they may want to adjust the original order date.
Assume Move-In	You may optionally allow MRP to move-in purchase order or work order dates from future periods to cover demand instead of generating new planned orders.
Suggested Dates	Suggested Order Dates are displayed on the Transaction Detail Tab in MRP Planning. These dates are generated from Exception Messages alerting planners that demand has changed and they may want to adjust the original order date.
Automatic Save	Planners can automatically save the generation once it has completed. In addition, the MRP Planning Screen now gives planners the option of saving changes or simply exiting the plan without saving changes.
Optimized Generation	Several modifications have been made to the MRP code to improve data processing speed. These modifications, coupled with the manual lead time definition for manufactured items, have resulted in up to 75% reduction in MRP Generation times. In one benchmark study, MRP took over 12 hours to run before the modifications were applied and less than 4 hours afterward.

Enhanced Material Requirements Planning

Product Features

Default Lead Time	This enhancement allows the user to define the number of days to use for MRP lead time calculations for inventory items with a lead time of zero days. This is useful if the lead time was not defined for items during implementation or for new items added to inventory after the implementation.
Mfg Lead Times	You can optionally define the lead time for manufactured items in Maintain Inventory. MRP will use the defined lead time instead of recalculating lead times from the standard routing.
Partial Grid Load	The planned order grid on the Enhanced MRP Planned Orders Tab has been enhanced to utilize partial grid loading similar to the grid on the MRP Items tab. This enhancement is useful for companies with significant numbers of planned orders since it reduces the time required to load the grid.
Make/Buy to Forecast	Two new checkboxes have been added to the MRP Options to optionally ignore on-hand balances and open work orders. These features are useful for companies who manufacture or purchase based exclusively on forecasts (either Sage 500 ERP Inventory Replenishment or e2b Sales Forecasting).
Material Type	A new Material Type code has been added to the Maintain Inventory screen. This code provides an additional classification of items for materials management.
MRP Planner	An MRP Planner code is now available in addition to the existing Buyer code. The MRP Planner code can be used to filter and sort MRP. Further, an email address may be defined by MRP Planner.
Exclude Bins	A bin may be excluded from MRP calculations. This new flag on Maintain Bins is useful for bin locations containing suspect material or inventory that is on-hold pending quality inspections or returns to vendors. Additionally, a checkbox is available to define quality control bins which may or may not be included in MRP calculations.



©2012 e2b technologies, inc. All rights reserved. Reproduction in whole or in part without permission is prohibited. The capabilities, system requirements and/or compatibility with third party products described herein are subject to change without notice. Contact e2b technologies for current information.

Enhanced Material Requirements Planning

Product Features

MRP Planning

MRP Version: Production Status: In Use

Item: FBA-1000 Aluminum Blade
 Whse: Tampa Tampa, Florida
 Safety Stock: .00000000 Min Qty: .00000000 Max Qty: .00000000

Item Summary | Period Summary | Transaction Detail | Planned Orders | Messages

Select...

Item	Whse	Description	On Hand	AdjOnHand	Unit	Low Bal	Low Date	High Bal	High Date
Cat5 Cable	Vernon	6FT Cat5 Crossover Cable	515.0000	8.0000	Each	-497.0000	03/20/2004	100.0000	06/05/2004
Cat5 Jacks	Rialto	Category 5 Jacks	946.0000	946.0000	Each	23.0000	03/20/2004	946.0000	02/19/2008
Cat5 Jacks	Vernon	Category 5 Jacks	39.0000	39.0000	Each	39.0000	02/19/2008	1100.0000	06/13/2004
CD-RW	Rialto	CD-RW	5.0000	5.0000	Each	5.0000	01/30/2008	6.0000	04/18/2004
Cellular Modem	Rialto	Megahertz 56K Global GS	103.0000	99.0000	Each	33.0000	03/24/2004	99.0000	01/30/2008
EtherlinkCard	Rialto	Etherlink Card	4227.0000	4227.0000	Each	73.0000	06/05/2004	4227.0000	01/30/2008
EtherlinkCard	Vernon	Etherlink Card	0.0000	0.0000	Each	0.0000	02/19/2008	30.0000	06/05/2004
Ethernethub	Rialto	Ethernet	5100.0000	5100.0000	Each	1000.0000	02/19/2008	5100.0000	01/30/2008
FBA-1000	Tampa	Aluminum							
FBP-1000	Tampa	Plastic B							
FBS-1000	Tampa	Stainless							
Flint Metallic	Tampa	Gray Top							
Flint Metallic Gray	Tampa	#25 Bas							
FPL-4A	Tampa	Injection							
FTA40	Tampa	Flat She							
FTS375	Tampa	3/8" flat							
Gateway400C	Rialto	Desktop							
Gateway400C	Vernon	Desktop							
Gateway500SE	Rialto	Intel Per							
Gateway500SE	Vernon	Intel Per							

Selection

Select

Field	Condition	
Item Id	All	
Warehouse	All	
Item Description	All	
MRP Planner	Is equal to	DuraJack
Buyer	Is equal to	Surfington
Or Buyer	Is equal to	Moncursor
Qty OnHand	All	
Adjusted Qty OnHand	All	
Low Balance	All	

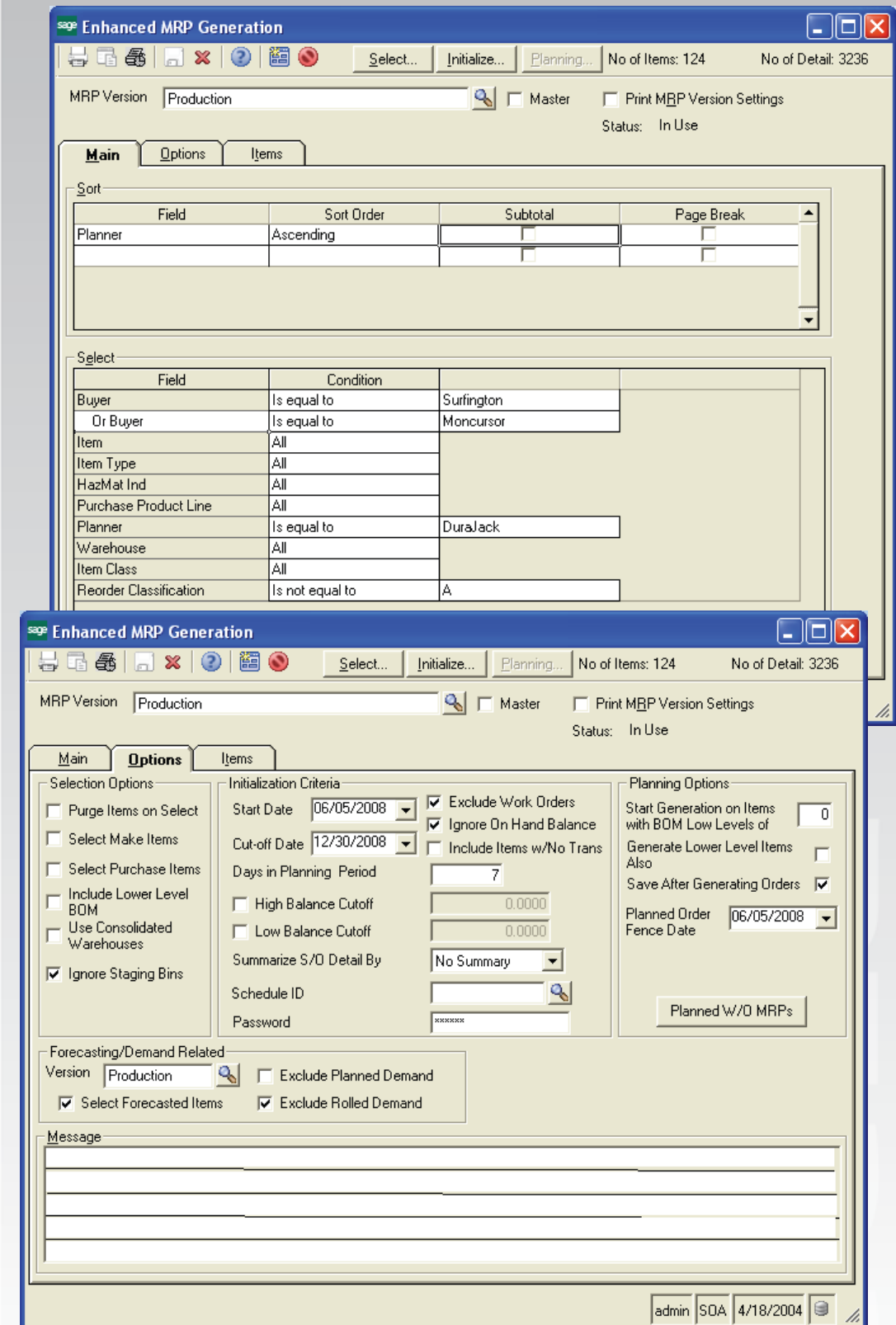
MRP Action Message Report (1)

Vendor: ShereTec

Gateway400C	Desktop Intel Celeron 400 MHz	Buy	06/05/2004	Release Due for Planned Order
Gateway500SE	Intel Pentium III 500 MHz 512I	Buy	06/05/2004	Release Due for Planned Order
Gateway700	Desktop Intel Pentium III 700 N	Buy	06/05/2004	Release Due for Planned Order
GatewayE 5200	Scaleable Workstation VX1	Buy	06/05/2004	Release Due for Planned Order
GatewayE 5250	Deluxe 550 Workstation	Buy	06/05/2004	Release Due for Planned Order
Keyboard	Keyboard	Make	04/18/2004	WO: 00001018 is Late. (Qty Required = 1, Date Requ
Gateway400C	Desktop Intel Celeron 400 MHz	Buy	06/05/2004	Release Due for Planned Order
Gateway500SE	Intel Pentium III 500 MHz 512I	Buy	06/05/2004	Release Due for Planned Order
GatewayE 5200	Scaleable Workstation VX1	Buy	06/05/2004	Release Due for Planned Order
UPS	Uninterruptible Power Supply	Buy	03/21/2004	Cancel Purchase Order 0000000176-2: Found in Period
UPS	Uninterruptible Power Supply	Buy	03/21/2004	PO: 0000000176-2 is Late. (Qty Required = 10, Date R
ViewSonic E771	ViewSonic E771	Buy	03/21/2004	Cancel Purchase Order 0000000176-1: Found in Period

Enhanced Material Requirements Planning

Product Features



©2012 e2b technologies, inc. All rights reserved. Reproduction in whole or in part without permission is prohibited. The capabilities, system requirements and/or compatibility with third party products described herein are subject to change without notice. Contact e2b technologies for current information.

Enhanced Material Requirements Planning

Product Features

MRP Planning - Transaction Detail

MRP Version: Production | Status: In Use

Item: FBA-1000 | Aluminum Blade
 Whse: Tampa | Tampa, Florida
 Safety Stock: .00000000 | Min Qty: .00000000 | Max Qty: .00000000

Display: All POs WOs Plan TI SOs Material Iss Plan TO Suggested Movements
 TIs Plan PO Plan WO TOs Demand Plan Material

	Trans Type	Trans	Trans QTY	Date	On Hand	Adj On Hand	+/-	Sugg Date
1	Beginning Balance			03/25/2008	100.0000	100.0000		
1	WO Material Issue	00001026-000040	-20.0000	04/18/2004	80.0000	80.0000	+	
1	Work Order	00001027	2026.0000	06/05/2004	2106.0000	2106.0000	+	06/12/2004
2	WO Material Issue	00001013-000040	-300.0000	06/12/2004	1806.0000	1806.0000	+	
2	Work Order	00001006	900.0000	06/12/2004	2706.0000	2706.0000	+	12/31/2099
3	Work Order	00001039-04	3000.0000	06/22/2004	5706.0000	5706.0000	+	01/12/2008
30	WO Material Issue	00001020-000040	-63.0000	12/31/2004	5643.0000	5643.0000	+	
133	Planned Material	769-000040	-1152.0000	12/22/2006	4491.0000	4491.0000	+	
133	Planned Material	894-000040	-63.0000	12/22/2006	4428.0000	4428.0000	+	
133	Planned Work Order	769-02	1152.0000	12/22/2006	5580.0000	5580.0000	+	
133	Planned Work Order	894-02	63.0000	12/22/2006	5643.0000	5643.0000	+	

MRP Planning - Planned Orders

MRP Version: Production | Status: In Use

Item: FBA-1000 | Aluminum Blade
 Whse: Tampa | Tampa, Florida
 Safety Stock: .00000000 | Min Qty: .00000000 | Max Qty: .00000000

Sort Options: Item/Whse/Date
 Whse/Item/Date
 Date/Item/Whse
 Date/Whse/Item

Set Flags Selection Criteria: Start Date: 06/05/2004 | End Date: 12/30/2008 | Whse: []

Order Type: All W/O's P/O's T/O's

Generate: Planned Orders
 Exclude Within Lead Time
 Assume PO Move In
 Assume WO Move In
 Actual Orders
 Consolidate PO's
 Remove Unfirm
 Exception Messages

Act	Frm	Exp	Bmp	Item	Whse	Req Date	Ord Date	Tran QTY	Type	Order No	Item
<input type="checkbox"/>	<input checked="" type="checkbox"/>	<input type="checkbox"/>	<input type="checkbox"/>	56k Internal/Sound	Rialto	06/05/2004	06/05/2004	30.0000	Purchase	1954	Modem Blaster
<input type="checkbox"/>	<input type="checkbox"/>	<input type="checkbox"/>	<input type="checkbox"/>	Bright Red Nazdar	Tampa	12/16/2006	12/02/2006	24.0000	Purchase	2305	SPL Bright Red
<input type="checkbox"/>	<input type="checkbox"/>	<input type="checkbox"/>	<input type="checkbox"/>	Bright Red Nazdar	Tampa	01/20/2007	01/06/2007	83.0000	Purchase	2306	SPL Bright Red
<input type="checkbox"/>	<input type="checkbox"/>	<input type="checkbox"/>	<input type="checkbox"/>	Bright Red Nazdar	Tampa	02/17/2007	02/03/2007	85.0000	Purchase	2307	SPL Bright Red
<input type="checkbox"/>	<input type="checkbox"/>	<input type="checkbox"/>	<input type="checkbox"/>	Bright Red Nazdar	Tampa	03/17/2007	03/03/2007	76.0000	Purchase	2308	SPL Bright Red
<input type="checkbox"/>	<input type="checkbox"/>	<input type="checkbox"/>	<input type="checkbox"/>	Bright Red Nazdar	Tampa	04/21/2007	04/07/2007	84.0000	Purchase	2309	SPL Bright Red
<input type="checkbox"/>	<input type="checkbox"/>	<input type="checkbox"/>	<input type="checkbox"/>	Bright Red Nazdar	Tampa	05/19/2007	05/05/2007	48.0000	Purchase	2310	SPL Bright Red
<input type="checkbox"/>	<input type="checkbox"/>	<input type="checkbox"/>	<input type="checkbox"/>	Bright Red Nazdar	Tampa	06/16/2007	06/02/2007	37.0000	Purchase	2311	SPL Bright Red
<input type="checkbox"/>	<input type="checkbox"/>	<input type="checkbox"/>	<input type="checkbox"/>	Bright Red Nazdar	Tampa	07/14/2007	06/30/2007	40.0000	Purchase	2312	SPL Bright Red
<input type="checkbox"/>	<input type="checkbox"/>	<input type="checkbox"/>	<input type="checkbox"/>	Bright Red Nazdar	Tampa	08/18/2007	08/04/2007	48.0000	Purchase	2313	SPL Bright Red
<input type="checkbox"/>	<input type="checkbox"/>	<input type="checkbox"/>	<input type="checkbox"/>	Bright Red Nazdar	Tampa	09/15/2007	09/01/2007	37.0000	Purchase	2314	SPL Bright Red

admin SOA 4/18/2004

©2012 e2b technologies, inc. All rights reserved. Reproduction in whole or in part without permission is prohibited. The capabilities, system requirements and/or compatibility with third party products described herein are subject to change without notice. Contact e2b technologies for current information.